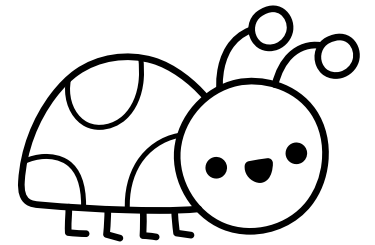
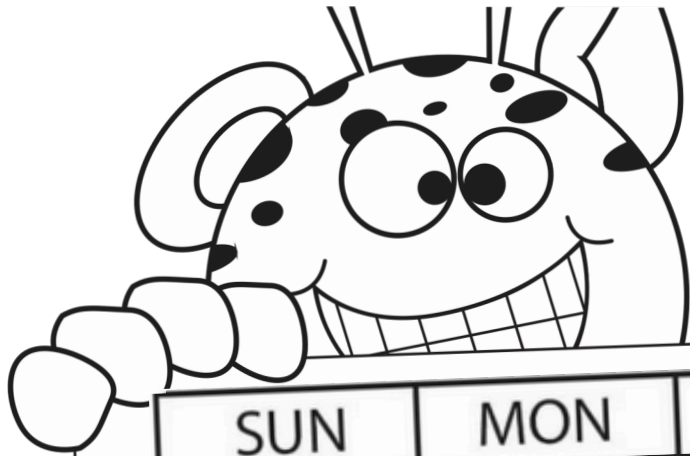


# May 2026

at Sacramento Children's Museum

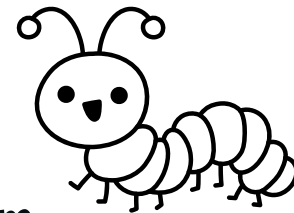


SUN	MON	TUE	WED	THU	FRI	SAT
 <p>Scan here to learn more about volunteer opportunities!</p>					<b>1</b> Storytime 10:30am S.T.E.M: Math Concepts 11:45am Active Play 1:30pm	<b>2</b> Active Play 11:30am S.T.E.M Activity 2:30pm
<b>3</b> Tinker Time 11:30am Art Pop-Up 2:30pm	<b>4</b> Museum Closed Sensory Friendly Play	<b>5</b> Tiny Tots 10:30am Cultural Connections 11:45am S.T.E.M Activity 1:30pm	<b>6</b> Music Fun 10:30am Nature Explorers 11:45am Art Pop-Up 1:30pm	<b>7</b> Tiny Tots 10:30am Cultural Connections 11:45am Tinker Time 1:30pm Big Day of Giving	<b>8</b> Storytime 10:30am S.T.E.M: Math Concepts 11:45am Active Play 1:30pm	<b>9</b> Special Storytime 11:30am S.T.E.M Activity 2:30pm
<b>10</b> Tinker Time 11:30am Art Pop-Up 2:30pm	<b>11</b> Museum Closed	<b>12</b> Tiny Tots 10:30am Cultural Connections 11:45am S.T.E.M Activity 1:30pm	<b>13</b> Music Fun 10:30am Nature Explorers 11:45am Art Pop-Up 1:30pm	<b>14</b> Tiny Tots 10:30am Cultural Connections 11:45am Tinker Time 1:30pm	<b>15</b> Storytime 10:30am S.T.E.M: Math Concepts 11:45am Active Play 1:30pm	<b>16</b> Museum Closed Fifteen Years of Play Fundraiser Event
<b>17</b> Tinker Time 11:30am Art Pop-Up 2:30pm BLUE STAR MUSEUMS	<b>18</b> Museum Closed	<b>19</b> Tiny Tots 10:30am Cultural Connections 11:45am S.T.E.M Activity 1:30pm	<b>20</b> Music Fun 10:30am Nature Explorers 11:45am Art Pop-Up 1:30pm	<b>21</b> Tiny Tots 10:30am Cultural Connections 11:45am Tinker Time 1:30pm Sensory Friendly Play	<b>22</b> Storytime 10:30am S.T.E.M: Math Concepts 11:45am Active Play 1:30pm	<b>23</b> Active Play 11:30am S.T.E.M Activity 2:30pm
<b>24</b> Tinker Time 11:30am Art Pop-Up 2:30pm	<b>25</b> Museum OPEN 10am to 3pm	<b>26</b> Tiny Tots 10:30am Cultural Connections 11:45am S.T.E.M Activity 1:30pm	<b>27</b> Music Fun 10:30am Nature Explorers 11:45am Art Pop-Up 1:30pm	<b>28</b> Tiny Tots 10:30am Cultural Connections 11:45am Tinker Time 1:30pm	<b>29</b> Storytime 10:30am S.T.E.M: Math Concepts 11:45am Active Play 1:30pm	<b>30</b> Active Play 11:30am S.T.E.M Activity 2:30pm Members-Only Mess Fest 10:00a - 11:30a
<b>31</b> Tinker Time 11:30am Art Pop-Up 2:30pm	<div style="display: flex; justify-content: space-between;"> <div style="width: 45%;"> <h2>Museum Hours</h2> <p>Tues-Fri: 10am - 3pm Sat-Sun: 10am - 4pm</p> </div> <div style="width: 45%;"> <h2>Members Only</h2> <p>Tues-Sun: 9am - 10am</p> </div> </div>					



# PROGRAMS

at Sacramento Children's Museum



## Weekly Programs

**Tiny Tots** - For those 24 months and under, join us for toddler story time, music fun, and more!

**STEM Activity** - STEM stands for Science, Technology, Engineering, and Mathematics, representing an educational approach that integrates these four disciplines to foster innovation, critical thinking, and problem-solving skills! Join us weekly for pop-up activities that highlight these foundational skills.

**Storytime** - Come take part in *Storytime* featuring books from our extensive collection! You never know what's in store.

**Cultural Connections** - Explore cultural celebrations, games, important people and more with themed activities or crafts!

**Music Fun** - Join us for singing & playing music, dancing & movement, or creating musical art!

**Art Pop Up** - This interactive pop-up explores different types of art styles!

**Nature Explorers** - Nurture your love for nature through bee talks, themed activities and crafts, gardening, and nature walks!

**Tinker Time** - Build, design, and solve engineering challenges in this fun, hands-on pop-up activity!

**Active Play** - Take part in energetic movement and full-body engagement, allowing children to develop motor skills, coordination, and overall fitness!



## Special Events

**Sensory Friendly Play** - May 4<sup>th</sup>, 10am to 11:30pm & May 21<sup>st</sup>, 3:30p to 5p - Sensory play is a fully accessible, low-cost program for children with sensory and/or special needs, their siblings, and their friends. To join us for our next session, register at [Sackids.org](http://Sackids.org)!



**Big Day of Giving** - May 7<sup>th</sup> - For thirteen years Sacramento Children's Museum has participated in the Sacramento Region Community Foundation's annual giving event, the Big Day of Giving. Early giving for the Big Day of Giving opens on Thursday, April 23<sup>rd</sup>, with the main celebration on Thursday, May 7<sup>th</sup>. Please consider making a gift to support our mission to spark to a life-long love of learning!

Big Day of Giving



**Special Storytime** - May 9<sup>th</sup> - 11:30am - Join us for a very special story time



**Fifteen Years of Play Fundraiser Event** - May 16<sup>th</sup> - 6pm to 9pm - The museum will be closed during the day on Saturday May 16<sup>th</sup> in preparation for our **Fifteen Year of Play** fundraising event. This adults-only (21+) event offers unique opportunities to connect, celebrate, and raise funds to ensure all Sacramento area children have access to joyful play. Scan here or visit [Sackids.org](http://Sackids.org) to register or for more info!



**Blue Star Program Begins** - May 17<sup>th</sup> - Blue Star Museums is a partnership between the National Endowment for the Arts and Blue Star Families, in collaboration with the Department of War and museums across America, offering free admission to the nation's active-duty military personnel and their families, including National Guard and Reserve. The 2026 program runs from Armed Forces Day, Saturday, May 16, 2026, through Labor Day, Monday, September 7, 2026. More info at [Sackids.org](http://Sackids.org)!



**Museum OPEN** - Monday, May 25<sup>th</sup> - 10am to 3pm - The museum will be open on Memorial Day Monday! Keep cool and spend your holiday with SCM. Please note: there will be no member-only hours.



**Members-Only Mess Fest** - May 30<sup>th</sup> - 4:30p to 6pm - Dress for the mess and get ready to be wet, sticky, gooey, and dirty—wear a swimsuit or play clothes, rain boots work too! We can't wait to see you at this fun, interactive event. Please note! Only members can register for this event. Scan here or visit [Sackids.org](http://Sackids.org) for more info!



Members get more at SCM! Join us for member-only hours, exclusive events, museum store discounts, and reciprocal benefits through the Association of Children's Museums Reciprocal Network and the Association of Science-Technology Centers Passport Program!